

# Spelman College Health Careers Program

*Welcome Class of 2018*

# Welcome and Introductions



**Dr. Rosalind Gregory-Bass** is the Director of the Health Careers Program at Spelman College (SC). She completed her undergraduate education at Spelman graduating cum laude with a Bachelor of Science Degree in Biology. Interested in the neuromusculoskeletal aspects of human pathophysiology, she completed her Master's degree and Doctorate of Medicine at the University of Wisconsin-Madison School of Medicine. Upon completion of her residency, practice-based experiences, and post-doctoral research fellowship, she returned to her first two loves: research and teaching. Her basic science and clinical research interests focus on women's health. Dr. Gregory-Bass' passion for teaching, science, and mentorship led her back to her alma mater to serve as a faculty member at Spelman. She has taught cell biology, organismal form and function, mammalian physiology, comparative mammalian anatomy, and developed paracurricular programs geared to enhancing the competitiveness of students interested in graduate and professional school.

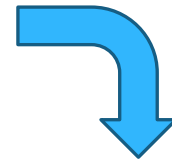


**Mrs. Shareah Elbert-Ajogbor, MBA** serves as the program coordinator and registered student organization advisor for the Health Careers Program. Her background is in business administration, marketing and organization. She has a Master of Business Administration and currently pursuing her doctoral degree in Business Administration.



**Mrs. Sonya M. Morris, MBA, MSL** serves as a Sr. Administrative Assistant for the Health Careers Program at Spelman College. She earned a Bachelor of Science in Business Administration and an double Masters of Science in Business Administration and Leadership.

# Your Legacy



**What is your  
legacy Class of  
2018?**

# Primary health care professionals teams include (but are not limited to):

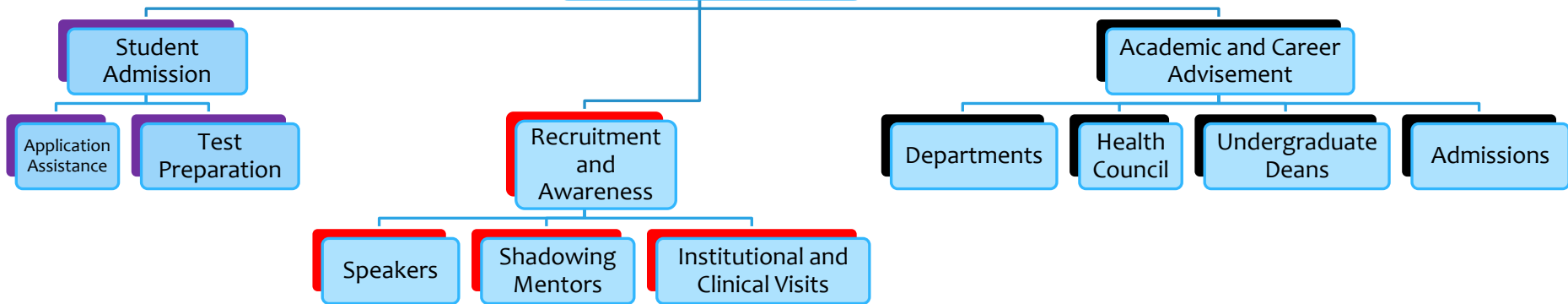
- physicians
- physician assistants
- nurse practitioners
- dietician/nutritionists
- dentists
- health educators and public health specialist
- social workers
- pharmacists
- Podiatrists
- optometrists
- And so many more.....

# HCP Mission and Goals

Dr. Rosalind Gregory-Bass

- \* **The Health Careers Program Office:**
  - \* Serves as a repository of information for students interested in careers in the health professions.
  - \* Provides access to information about
    - \* professional schools
    - \* admissions requirements
    - \* financial aid
    - \* summer enrichment programs
    - \* career options
  - \* The office also coordinates visits by recruitment personnel from various health and allied health professional schools and programs.

# Health Careers Framework



# Key Aspects of Your New Journey

Dr. Rosalind Gregory-Bass



Academic  
Development

- Courses
- Paracurricular academic activities

Career  
Development

- Shadowing Internships
- Summer programs

Personal  
Development

- Inventories (i.e. Strong Interest, Myers-Brigg, Self Directed Search)
- Reflection Exercises

# Registration and Communication

Sonya Morris

- \* Registration

- \* Rationale
- \* Web Link

- \* Communication

- \* Office Hours
- \* Seminars and Workshops
- \* Website and Monthly Calendar
- \* Social Media





# Programmatic Offerings

Shareah Elbert-Ajogbor

- \* Monthly Seminar Meetings
- \* Recruitment Visits
  - \* On campus
  - \* Off campus



# Programmatic Offerings-RSO's

Shareah Elbert-Ajogbor

- \* Health Careers Club
- \* Pre-Dental Institute
- \* Society of Pre-pharmacy Professionals
- \* Operation Smile
- \* Medical and Dental Global Brigade
- \* AUC Alpha Epsilon Delta Honor Society

# This Week's Focus

- \* Register with the Health Careers Program
- \* Take Math placement exam seriously
- \* Solidify your class schedule and time management schedule
- \* Identify peer educators and tutors for math and science courses
- \* Only sign-up for 1-2 extra-curricular activities until your midterm average shows you have all solid A's and B's.
- \* Identify support systems and stress management plan

# Contact Information

- \* Health Careers Program
- \* Tapley Suite 126
- \* 350 Spelman Lane, Box 1421, Atlanta, GA 30314
- \* Main Number: 404-270-5814
- \* Fax Number: 404-270-5816
- \* Email: [healthcareers@spelman.edu](mailto:healthcareers@spelman.edu)
- \* Facebook: <http://facebook.com/HCPrg>

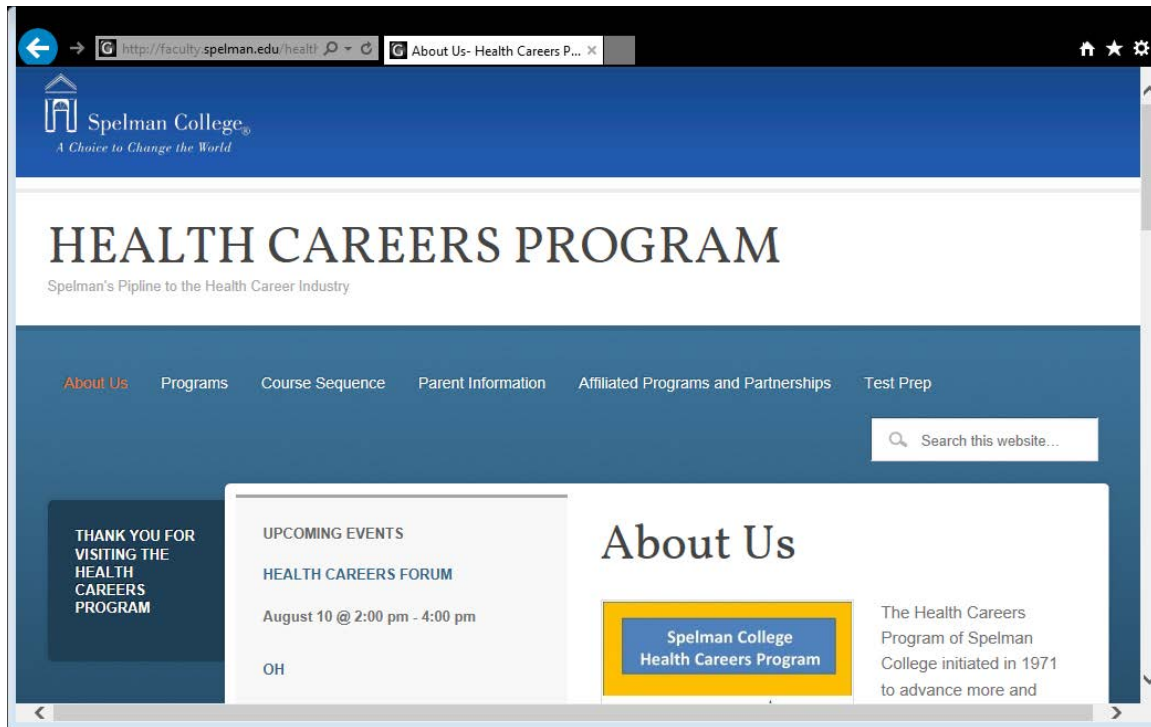
# Student Profile Link

- \* Database that allows the SCHCP to view and assess the needs of our students.
  - \* [Link](#)
    - \* Access from your dorm
    - \* Deadline August 31<sup>st</sup>
- \* Contact Mrs. Sonya Morris  
Tapley 125 office: 404-270-5814  
[healthcareersprogram@spelman.edu](mailto:healthcareersprogram@spelman.edu)



# Website

<http://faculty.spelman.edu/healthcareersprogram/us>



The screenshot shows a web browser window displaying the Spelman College Health Careers Program website. The browser's address bar shows the URL <http://faculty.spelman.edu/healthcareersprogram/us>. The website header features the Spelman College logo and the tagline "A Choice to Change the World". The main heading is "HEALTH CAREERS PROGRAM" with the subtitle "Spelman's Pipeline to the Health Career Industry". A navigation menu includes links for "About Us", "Programs", "Course Sequence", "Parent Information", "Affiliated Programs and Partnerships", and "Test Prep". A search bar is located on the right side of the navigation menu. The main content area is divided into three sections: a dark blue box on the left that says "THANK YOU FOR VISITING THE HEALTH CAREERS PROGRAM", a white box in the middle titled "UPCOMING EVENTS" listing a "HEALTH CAREERS FORUM" on August 10 from 2:00 pm to 4:00 pm, and a white box on the right titled "About Us" with a yellow-bordered box containing the text "Spelman College Health Careers Program" and a paragraph of text below it.

